

Form K3707

This Book should be carefully
preserved for reference

INSTRUCTIONS

FOR USING AND ADJUSTING

SINGER

B.U.K. ELECTRIC MOTORS

WITH KNEE CONTROL FOR
FAMILY SEWING MACHINES



This Trade Mark Embossed in Brass
is on the Arm of every
Singer Sewing Machine.

When requiring
Needles, Oil,
Parts or Repairs
for your Machine



Look for the
Red "S"
There are Singer
Shops in every City

THE SINGER MANUFACTURING CO.

1930

All Rights Reserved

USE ONLY SINGER
LUBRICANT FOR
ELECTRIC MOTORS



THE BEST IS
THE CHEAPEST



We prepare a specially
compounded lubricant
for use with our motors
SINGER LUBRICANT
is supplied in small tubes



TO AVOID TROUBLE,
USE SINGER MOTOR
LUBRICANT ONLY

THE SINGER B.U.K. SEWING MOTOR

THIS efficient motor has been specially designed for the operation of Singer Family Sewing Machines, its speed being at all times under the perfect control of the operator.

Instructions for Attaching the Motor.

The motor is attached to the machine arm, below the balance wheel, by means of a bracket and screw. To fit the bracket, remove the japan from the edges of the tongue (A. Fig. 1), over which the slot in the bracket will fit. This is necessary so that the bracket will slide up and down freely.

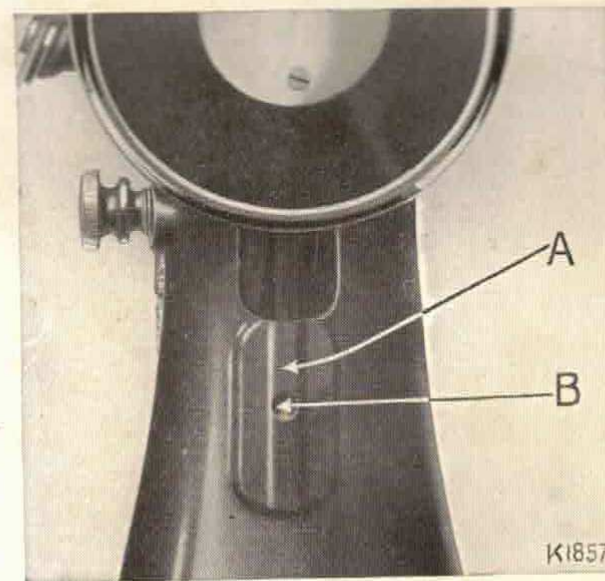


Fig. 1. Removing Japan from Tongue.

Place the motor bracket on the tongue, as shown in Fig. 2, so that the hole (B, Fig. 1) in the centre of the tongue can be seen through the slot (C, Fig. 2) in the motor bracket; then insert the screw (D, Fig. 2) and, after moving the motor upwards as far as it will go, tighten the screw.

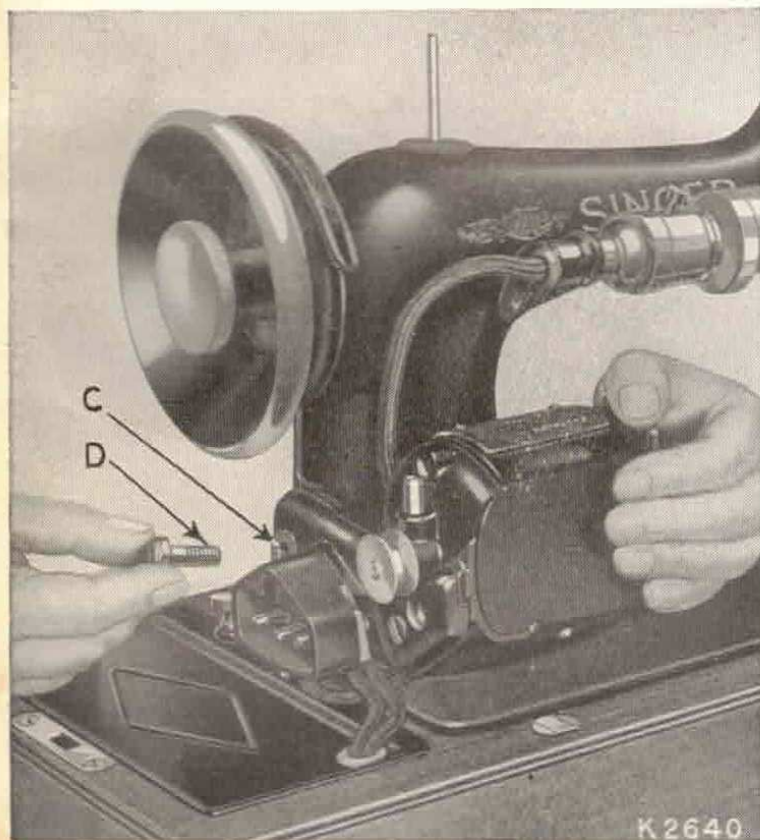


Fig. 2. Placing the Motor in Position.

Putting on the Fabric Belt.

Place the fabric belt over the top of the balance wheel into the groove at its back, as shown in Fig. 3, and then force the belt into the groove in the

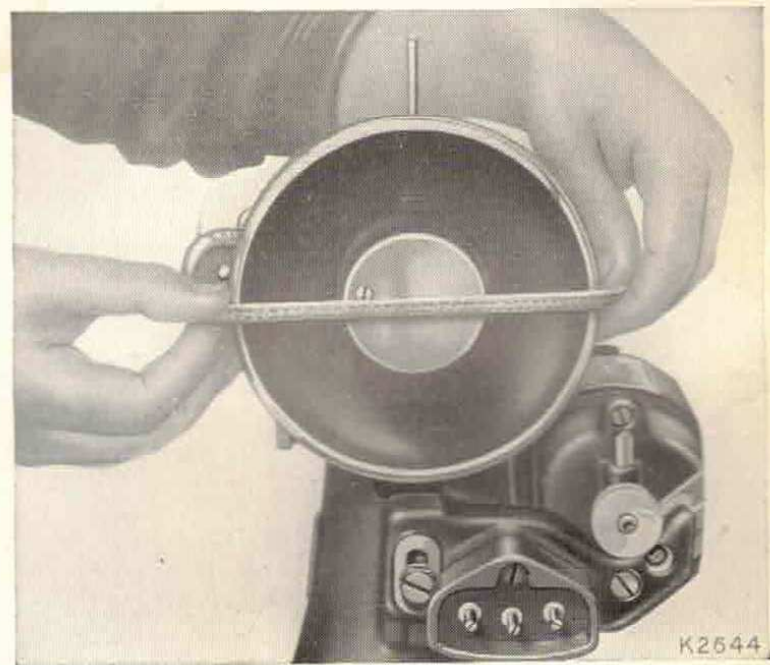


Fig. 3. Putting on the Fabric Belt.

motor pulley in the manner shown in Fig 4. This is easily accomplished by placing the belt half over the motor pulley (E, Fig. 4) and holding it firmly in position with the thumb of the right hand; a slight turn of the balance wheel will then cause it to spring into position.



Fig. 4. Springing the Belt into Position.

Regulating the Belt Tension.

To adjust the belt tension, loosen the screw (D, Fig. 5); this will allow the motor to drop downward. Now firmly retighten the screw, and the belt will be found to have the correct tension.



Fig. 5. Regulating the Belt Tension.

Electrical Connections.

The motor, controller, and Singerlight are supplied fitted with flexible cords for making the necessary electrical connections.

These connections are made as follows :—

Remove the terminal block (R, Fig. 6) by taking out the screw (S, Fig. 6). Then remove the three insulated thumb nuts (U, Fig. 7); also the three

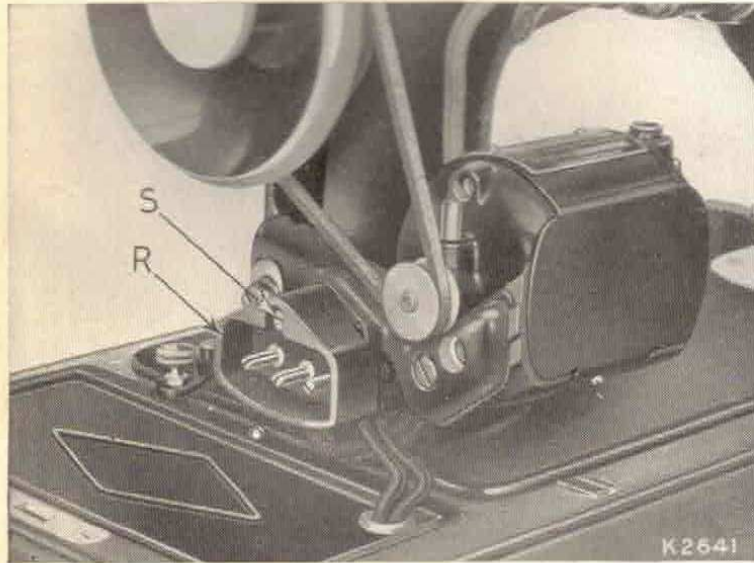


Fig. 6.

brass washers (V, Fig. 7). It will be noticed that the terminal block has three screw posts, and that those to the outside have distinctive coloured spots against them.

Place the eyelets, at the ends of the red leads, on the post nearest the red spot. Place the eyelets of the yellow leads on the post nearest the yellow spot, and the eyelets of the black leads on the centre post.

Replace the three brass washers (V) and the three thumb nuts (U), tightening the latter securely; then, with the screw (S), fasten the terminal block to the motor bracket, as shown in Fig. 6, and insert the socket plug into the three-pin terminal. To this plug is attached the supply lead.



Red
Black
Yellow

Fig. 7. Attaching the leads.

The Knee Lever.



Fig. 8.

The knee lever actuates the controller, which, in the case of Singer Portable Machines, is located in the recess in the machine wood base.

When not in use, the lever is conveniently housed in the machine cover. To use, remove it from the cover and insert its end (H, Fig. 8) into the hole (G, Fig. 8) in the front of the base. To do this, the lever should be held lengthwise of the base,

as shown in Fig. 8. When the machine is not in use, the lever should be removed and replaced in the top of the machine cover, as shown in Fig. 10.

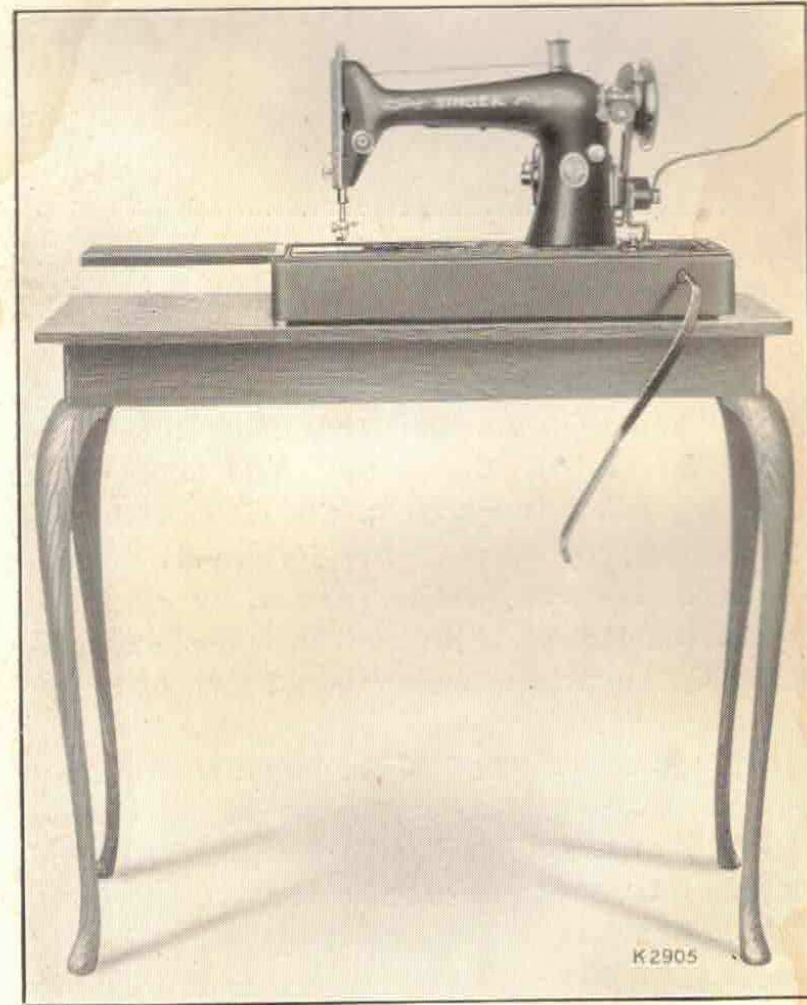


Fig. 9. Portable Machine, Knee Control
(showing Knee Lever in Position).

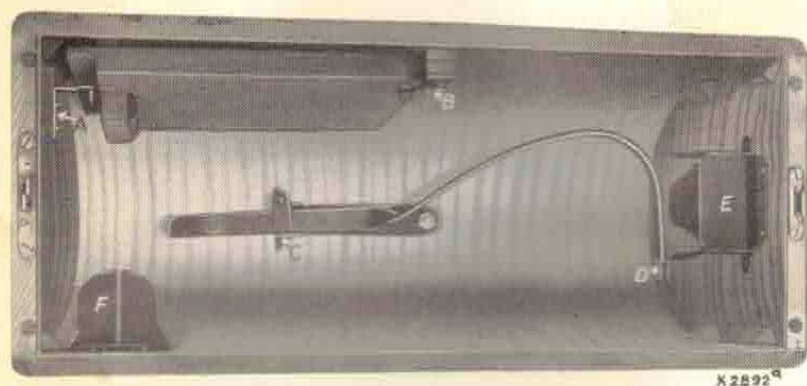


Fig. 10.

The above illustration shows the correct position of the Auxiliary Table and Knee Lever in the cover for 15K and 66K Machines. The hook of the Auxiliary Table is placed in the Hook Holder A, and secured by turning the Button B inwards. The Knee Lever is held in position by placing its end in the Holder D and its knee portion in the fitting C, the latch of which should then be turned.

In the cover for the 99K Machine, the position of the Knee Lever is reversed, the fitting C being attached to the other handle bolt, and fitting D placed on the lock end of the cover. Otherwise the method of attaching the lever is the same.

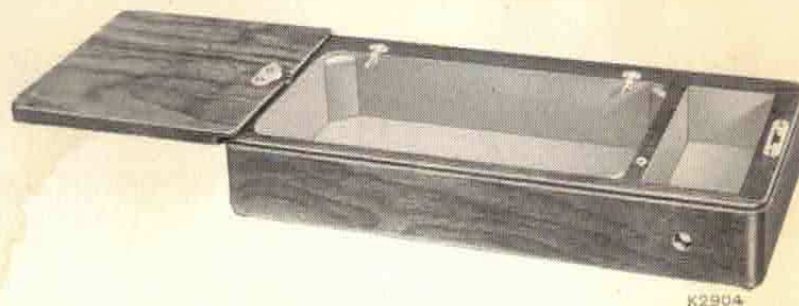


Fig. 11.

Base showing Auxiliary Table in position.

The Auxiliary Table is attached to the base by placing the hook of the former in the lock plate of the base, at its left hand end.

Speed.

The speed of the machine is at all times under complete control. By pressure of the knee against the knee lever, speeds can be obtained varying from bare movement up to 1000 stitches per minute, as required by the work in hand. Immediately the pressure is withdrawn, the machine will stop. It is not necessary to touch the wheel, as the machine will always start in the right direction.

The speed of the machine should always be regulated by means of the knee lever. It is detrimental to the motor to retard the speed by placing the hand on the wheel of the machine.

Embroidery and Darning.

For embroidery and darning, the machine requires to be operated at a low speed. Light pressure of the knee against the lever will set the machine in motion at a low speed suitable for the convenient handling of materials being darned or embroidered.

To prepare the machine for this work, remove the presser foot and raise the presser bar. Then adjust the stitch-regulating screw, so that the feed will be inoperative.

It is advisable that the throat plate be covered with the supplementary plate made for the purpose, and it is essential that an embroidery hoop be used for clamping the material. The purpose of the latter is to keep the work taut and to permit of it being conveniently moved backward and forward and from side to side by hand between the stitches.

Feed cover plates and wooden hoops can be obtained at any Singer Shop or from any Singer salesman, at small cost.

Darning by machine, when well done, is almost imperceptible. It is far stronger and better than hand work, and is much more quickly executed.

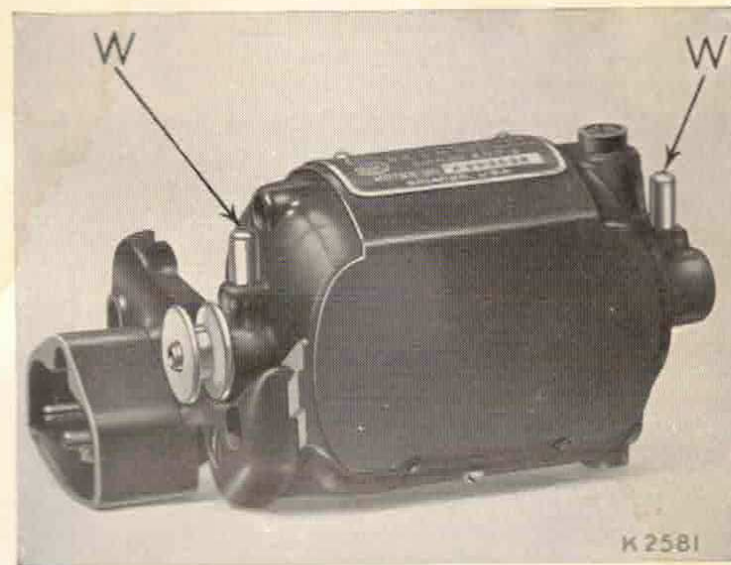


Fig. 12.

To Lubricate the Motor.

When sent from the factory the motor is lubricated sufficiently for approximately six months' use.

A tube of Singer Motor Lubricant is furnished with each outfit. This tube has a tip which will fit into the two lubricating holes (W.W., Fig. 12) leading to the motor bearings.

Never under any circumstances apply oil to any part of the motor. Singer Lubricant, which is specially compounded for use with Singer Motors, will remain just where it is wanted in the motor bearings, while oil would work its way into the commutator and brushes, giving rise to considerable trouble and vexation, such as difficulty in starting, over-heating, smoking, etc.

The Singerlight.

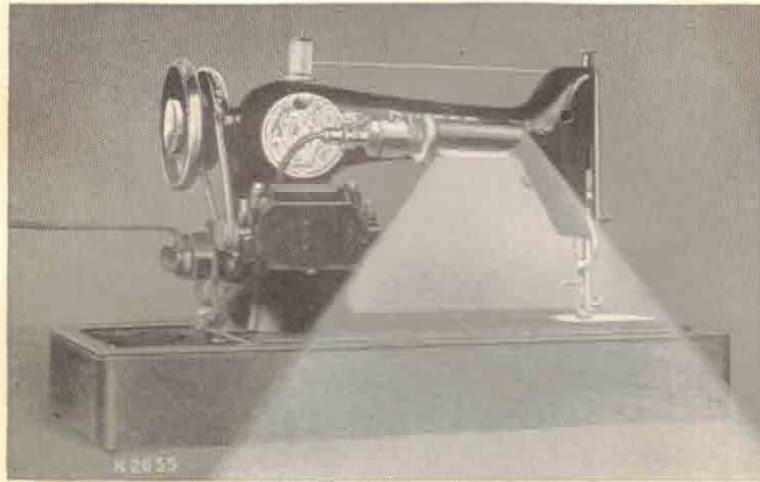


Fig. 13.

This improved light should be fitted to all Singer Sewing Machines where electric current is available. The above illustration clearly demonstrates its advantages, light being thrown just where it is needed, thus enabling the operator to see the stitching more clearly and prevent eye strain and fatigue. The quality of the work performed by its aid is therefore much improved. It saves time and annoyance when threading the needle—in fact its many advantages are worth far more than its cost.

To Remove the Bulb.

To remove the bulb, hold the Singerlight socket tightly with one hand, and with the other hand turn the shade half-way around until the pin in the socket is opposite the slot in the shade collar; then gently pull the shade forward and allow it to hang free, as shown in Fig. 14.

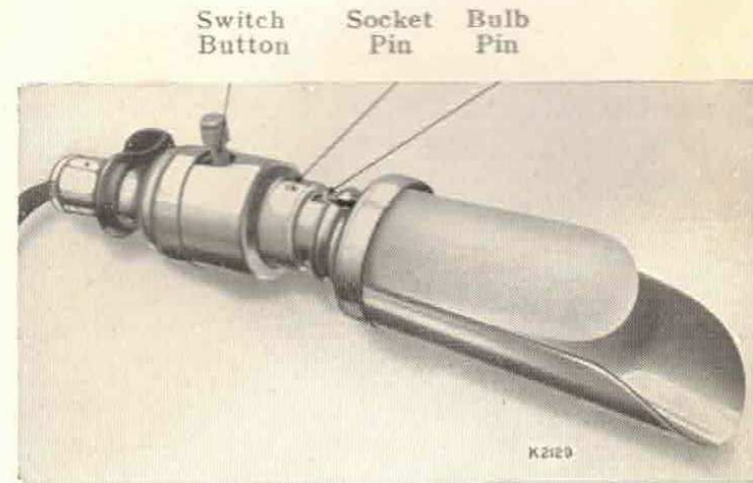


Fig. 14.

Press the bulb into the socket, and at the same time, turn it away from the machine until the bulb-pin is out of the notch; then withdraw the bulb and shade.

To Replace the Bulb.

Pass the metal end of the bulb through the collar of the shade, with the slot in the shade collar upward. Hold the socket tightly with one hand, and with the other hand press the bulb into it, with the bulb-pin in the slot of the socket. Next, turn it towards the machine until this pin is in the notch; then slip the shade over the socket, with the socket-pin in the slot of the shade collar. See that the shade is pressed well home, so that the pin is opposite the ridge in the shade collar. Then turn the shade until it is at the top.

To Light the Lamp.

To obtain light, push the small knob on the top of the lamp over towards the lamp shade.

THE IMPORTANCE OF USING SINGER NEEDLES FOR YOUR SEWING MACHINE



You will obtain the best stitching results from your sewing machine if it is fitted with a Singer Needle.



Singer Needles can be purchased only from Singer Shops or Singer Salesmen.



Singer Needles are contained in Green Packets which bear the famous red letter "S."