



**SINGER
SEWING MACHINES
FOR FAMILY USE**



Agents in every town in
Australasia

You cannot get the best Stitching results from your Sewing Machine unless it is fitted with a Singer Needle.



With an inferior made Needle, the thread is looped badly and fails to meet the shuttle properly causing skipped or badly laid stitches. Often, owing to the eye being rough, the thread is frayed and broken, or the needle, being badly tempered, breaks easily.

TO AVOID THESE TROUBLES

purchase your Sewing Machine Needles only from Singer Shops or Singer Salesmen. In green packets bearing the famous Red Letter "S."

PRICE ONLY 3d. PER PACKET.

BEST NEEDLES, OIL, PARTS and ATTACHMENTS can be obtained from the Local Singer Shop or Singer Salesmen.

MACHINES OF ANY MAKE REPAIRED.

MAIN DISTRIBUTING CENTRES.

New South Wales.

BATHURST	-	-	59 Keppel St.
BROKEN HILL	-	-	Argent St.
BURWOOD	-	-	Burwood Rd.
DUBBO	-	-	Talbragar St.
GOULBURN	-	-	Auburn St.
LISMORE	-	-	Woodlark St.
NEWCASTLE	-	-	98 Hunter St.
NEWTOWN	-	-	256 King St.
NTH. SYDNEY	-	-	76 Miller St.
PADDINGTON	-	-	370 Oxford St.
PARRAMATTA	-	-	250 Church St.
SYDNEY	-	-	673/5 George St., Haymarket.
..	-	-	1 Queen Victoria Markets, George St.
TAMWORTH	-	-	Peel St.
WAGGA	-	-	Baylis St.

New Zealand.

AUCKLAND	-	-	213 Queen St.
	-	-	50 Karangahape Rd.
CHRISTCHURCH	-	-	668 Colombo St.
DUNEDIN	-	-	37 George St.
PALMERSTON NTH.	-	-	Main St.
WELLINGTON	-	-	8 Willis St.

Tasmania.

HOBART	-	-	64 Elizabeth St.
--------	---	---	------------------

New Caledonia.

BOREL ET LOISEAU	-	-	Noumea.
------------------	---	---	---------

West Australia.

FREMANTLE	-	-	William St.
KALGOORLIE	-	-	Hannan St.
PERTH	-	-	766/70 Hay St.

South Australia.

ADELAIDE	-	-	35 Rundle St.
	-	-	Market St.
PORT' PIRIE	-	-	Alexander St.

Queensland.

BRISBANE	-	-	250 Queen St.
	-	-	Stanley St.
MARYBOROUGH	-	-	Kent St.
ROCKHAMPTON	-	-	East St.
TOOWOOMBA	-	-	Ruthven St.
TOWNSVILLE	-	-	Flinders St.

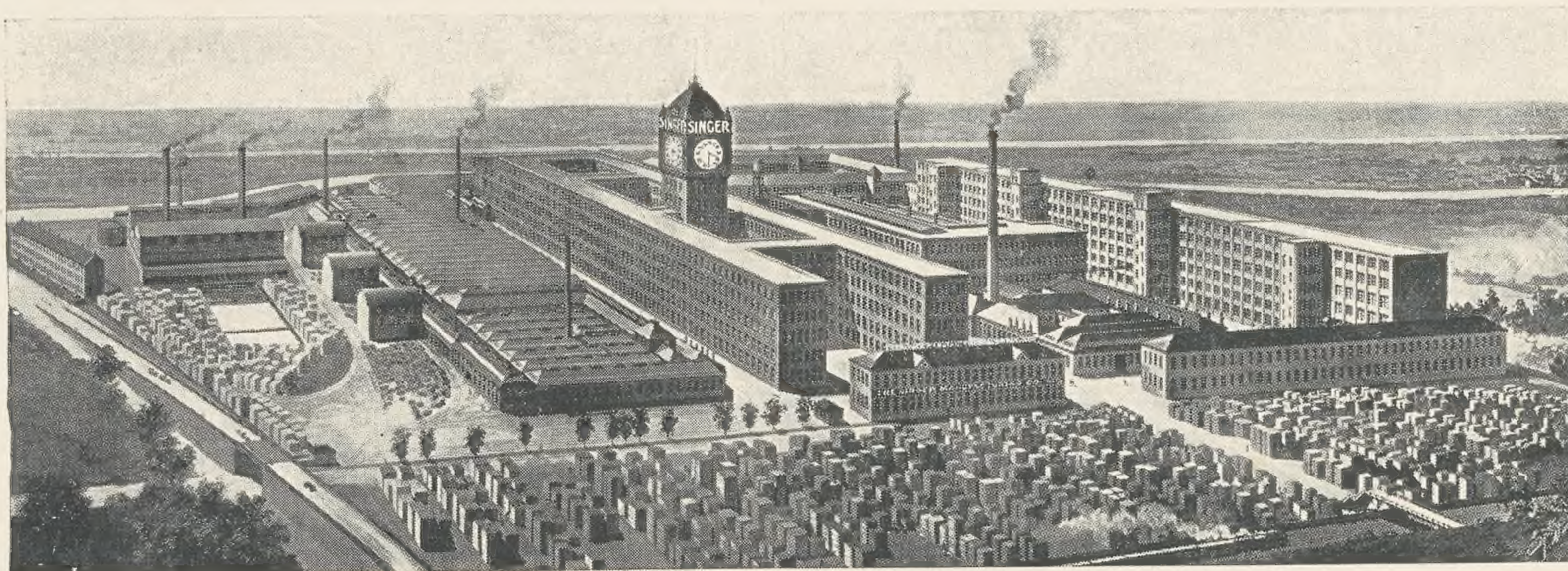
Victoria.

BALLARAT	-	-	12 Sturt St.
BENDIGO	-	-	45 Pall Mall.
COLLINGWOOD	-	-	100 Smith St.
MELBOURNE	-	-	324/8 William St.
..	-	-	"The Block," Collins St.
NORTHCOTE	-	-	239 High St.
PRAHRAN	-	-	201 Chapel St.
STH. MELBOURNE	-	-	256 Clarendon St.

Headquarters for Australasia:
119/123 YORK STREET, SYDNEY, N.S.W.

WHERE SINGER SEWING MACHINES ARE MADE.

View of the World's largest and most complete Sewing Machine Factory,
Singer, near Glasgow, Scotland. Number of Workmen 13,000.



Many sewing machine users have experienced the annoying loss, or breakage, of some part of a so-called "cheap" machine, obtained from a dealer or draper, etc., whose only interest is to sell, and who is not responsible for its manufacture. Such dealers, etc., are constantly changing the make of machine they offer for sale, sell them only as a side line, and therefore cannot be relied upon to furnish duplicate parts of the machines they supply or attend to adjustments when required.

There are over 7000 Singer Shops throughout the World.

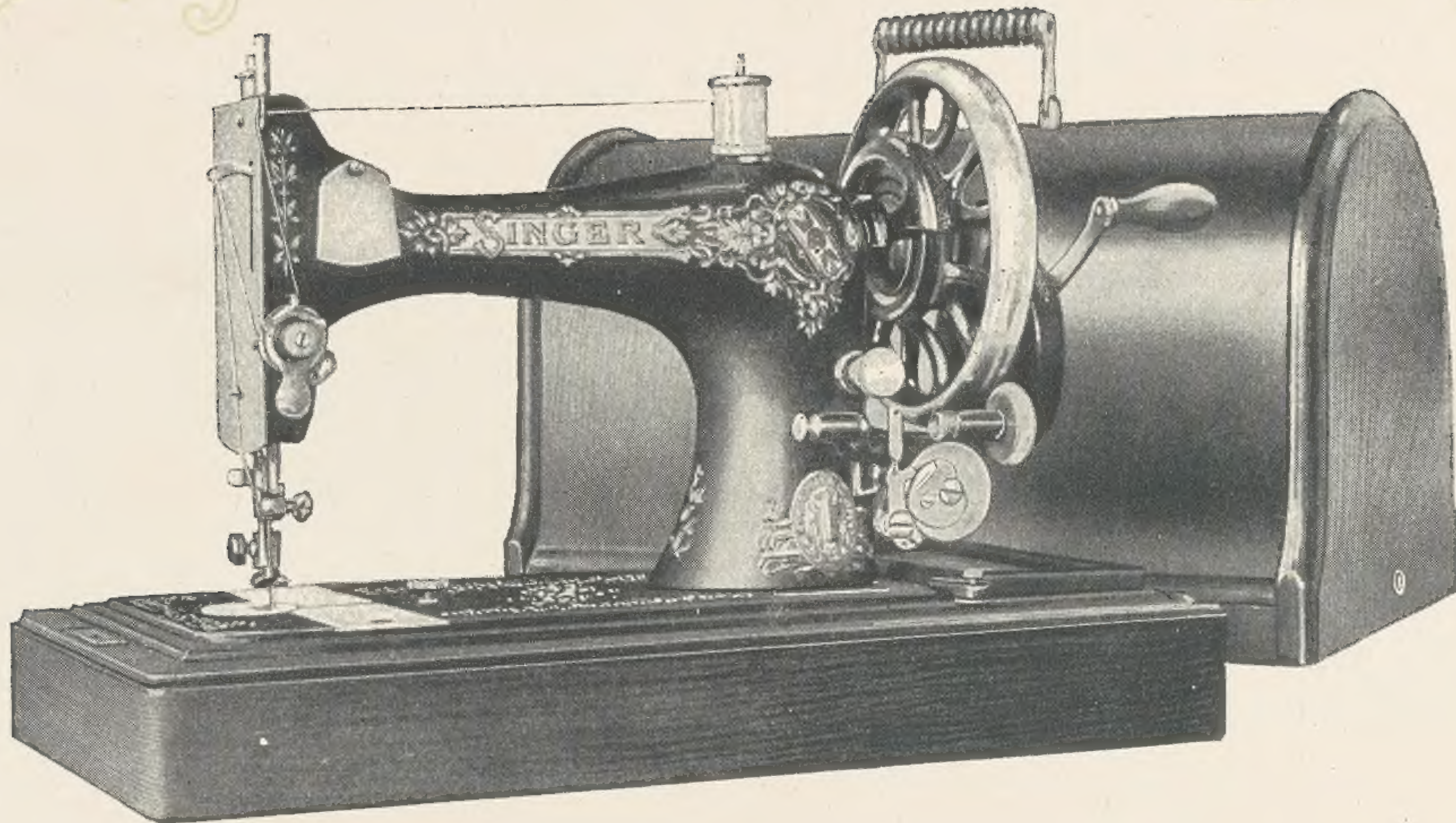
devoted exclusively to the sale of Singer Sewing Machines, parts and accessories. This is an important consideration to the purchaser of a sewing machine. By buying a Singer you are dealing with a Company which is permanent, and devotes all its energy to perfecting and selling the World's Best Sewing Machines.

THE Machines illustrated in this Catalogue represent the BEST and LATEST types of Sewing Machines.

The CABINET WORK is of the HIGHEST CLASS; it is made from wood cut in the Company's own forests, and the great care exercised in its selection and finish ensures ABSOLUTE PERFECTION.

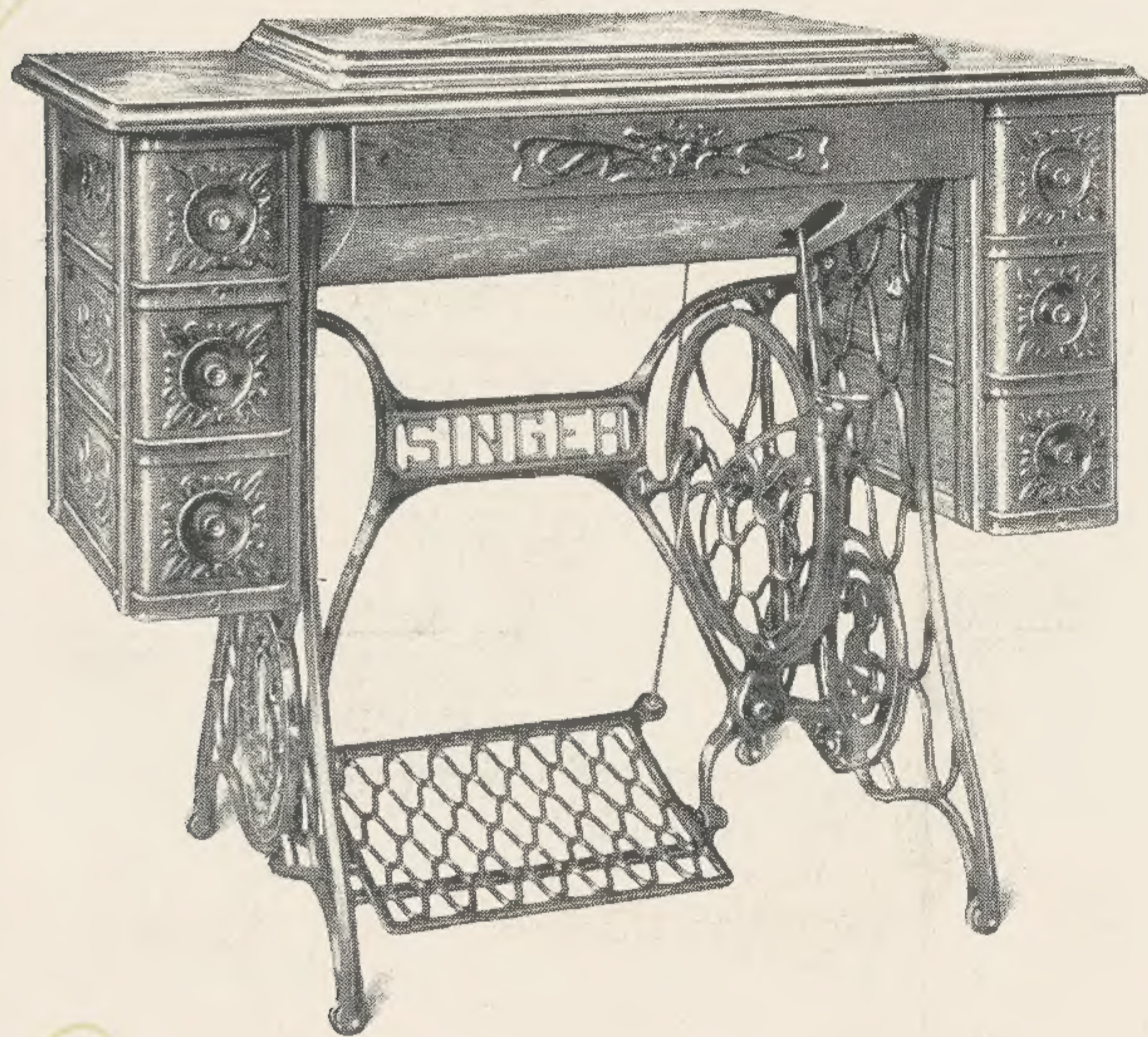
Singer Sewing Machines for Family Use can always be obtained for FREE TRIAL, and if you will send a POST CARD to any Singer Shop, or ask a Singer Salesman, the machine you fancy will be delivered to your home for a free trial, absolutely without expense to you,

SINGER SEWING MACHINE CO.



HAND MACHINE WITH PORTABLE ROUND TOP COVER

Singer Machine No. 28K



**Seven-Drawer
Embossed
Cabinet Table**

(Closed)

MACHINES Nos.
15K AND 127K
are also furnished on this
style of Table.

Liberal Discounts for Cash
and Short-time Payment.

(For Prices see page 9.)

Singer Machine No. "66"

**Seven-Drawer
Embossed
Cabinet Table**

(Open).

MACHINES Nos.
15K AND 127K
are also furnished on this
style of Table.

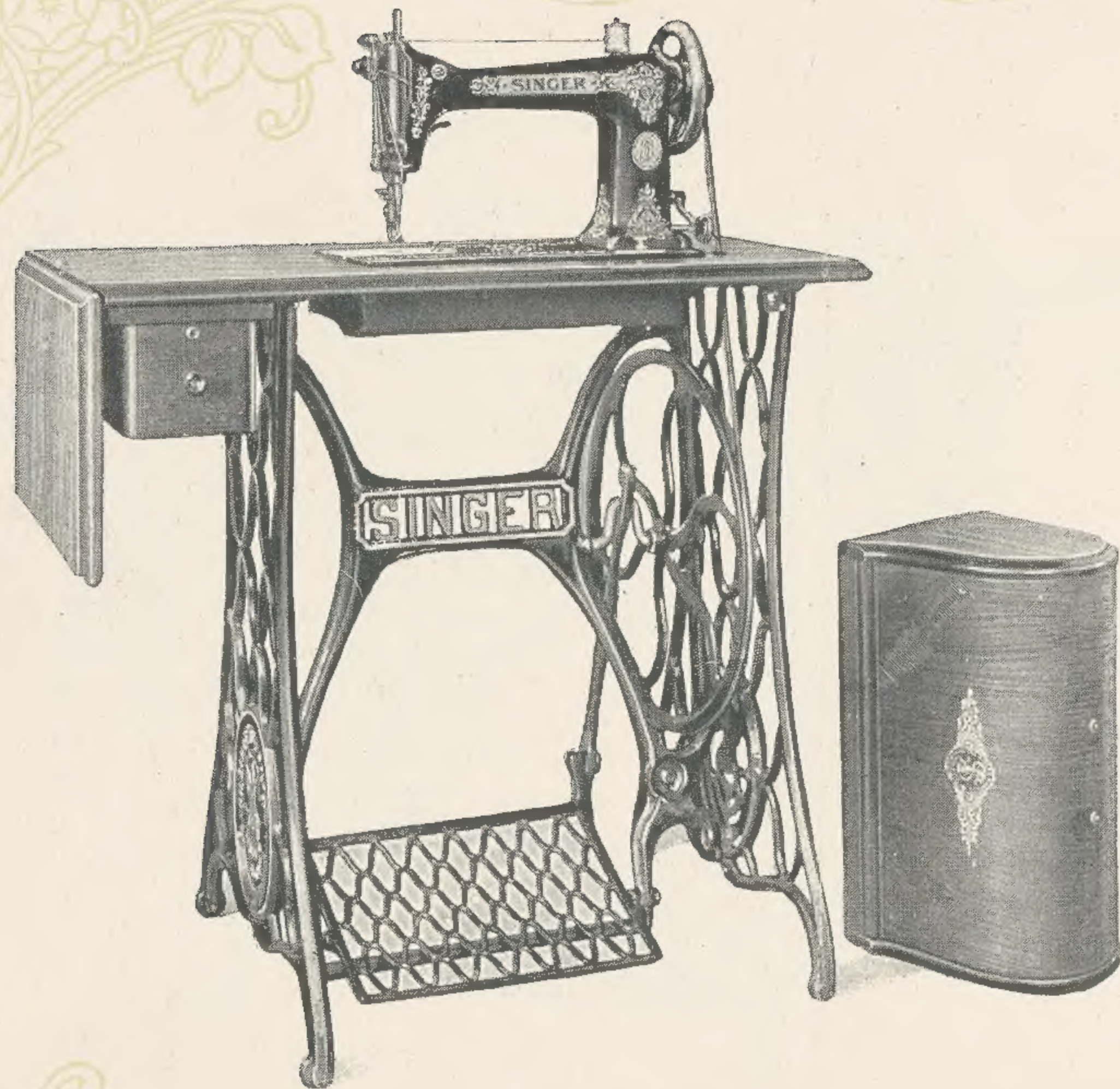
Liberal Discounts for Cash
and Short-time Payment.

(For Prices see page 9.)



790 GEORGE STREET,
SYDNEY.

Singer Machine No. "66"



One-Drawer
Extension Leaf Table
and Round Top Cover

(For Prices see opposite page.)

Singer Rotary Machine No. 9W

PRICES OF
CLASS 15K, 127K AND 66K MACHINES
ON 7-DRAWER CABINET TABLE,
 as illustrated on pages 6 and 7.

CLASS 9W supplied on 1-Drawer Drop Leaf Table with Cover
 (see illustration on page 8).

For Cash, Short-time or Regular Payments, customers may obtain
 the following Discounts from the List Price.

Style of Machine.	List Price.	10% For Cash.	7½% If paid for within 3 months from date of agreement.	5% If a payment of 5/- per week be maintained during the hiring.	2½% If a payment of 2/6 per week be maintained during the hiring.
Making the net amount payable in order to complete purchase					
9W	£12 0 0	£10 16 0	£11 2 0	£11 8 0	£11 14 0
15K	14 10 0	13 1 0	13 8 3	13 15 6	14 2 9
127K	14 10 0	13 1 0	13 8 3	13 15 6	14 2 9
66K	15 0 0	13 10 0	13 17 6	14 5 0	14 12 6

Liberal allowances will be made from the List Price for old machines taken in part exchange.

If you desire to have one of the above Machines for FREE TRIAL, you can obtain one by sending to the nearest Singer Shop or asking a Singer Salesman.

Singer Sewing Machines



**Embossed
Drawing-Room Cabinet**
(Closed).

LIST PRICES

For 15K and 127K Machines

£18 10 0

For 66K Machine

£19 0 0

less regular discounts for cash,
short-time or regular payments.

Singer Machine No. "66"

**Embossed
Drawing-Room Cabinet**

(Open).

Machines Nos. 15K and 127K
are also supplied on this style
of Cabinet Work.

(For Prices see opposite page)

This handsome Cabinet is so constructed that the Machine can be pushed down below the top of the case; the Extension Leaf shown is then folded over the top, covering the Machine.

When the machine is required for use, a slight pressure on a button causes it to rise into position, where it is supported by the top doors being pushed in, while the bottom doors are opened outwards, to allow access to the treadle.



Singer Machine No. "66"



The
Dressmaker's
Machine

(For Prices see page 16.)

For use on all classes
of white work and light
fabrics.

Singer Machine No. 15K with Leaf
Table

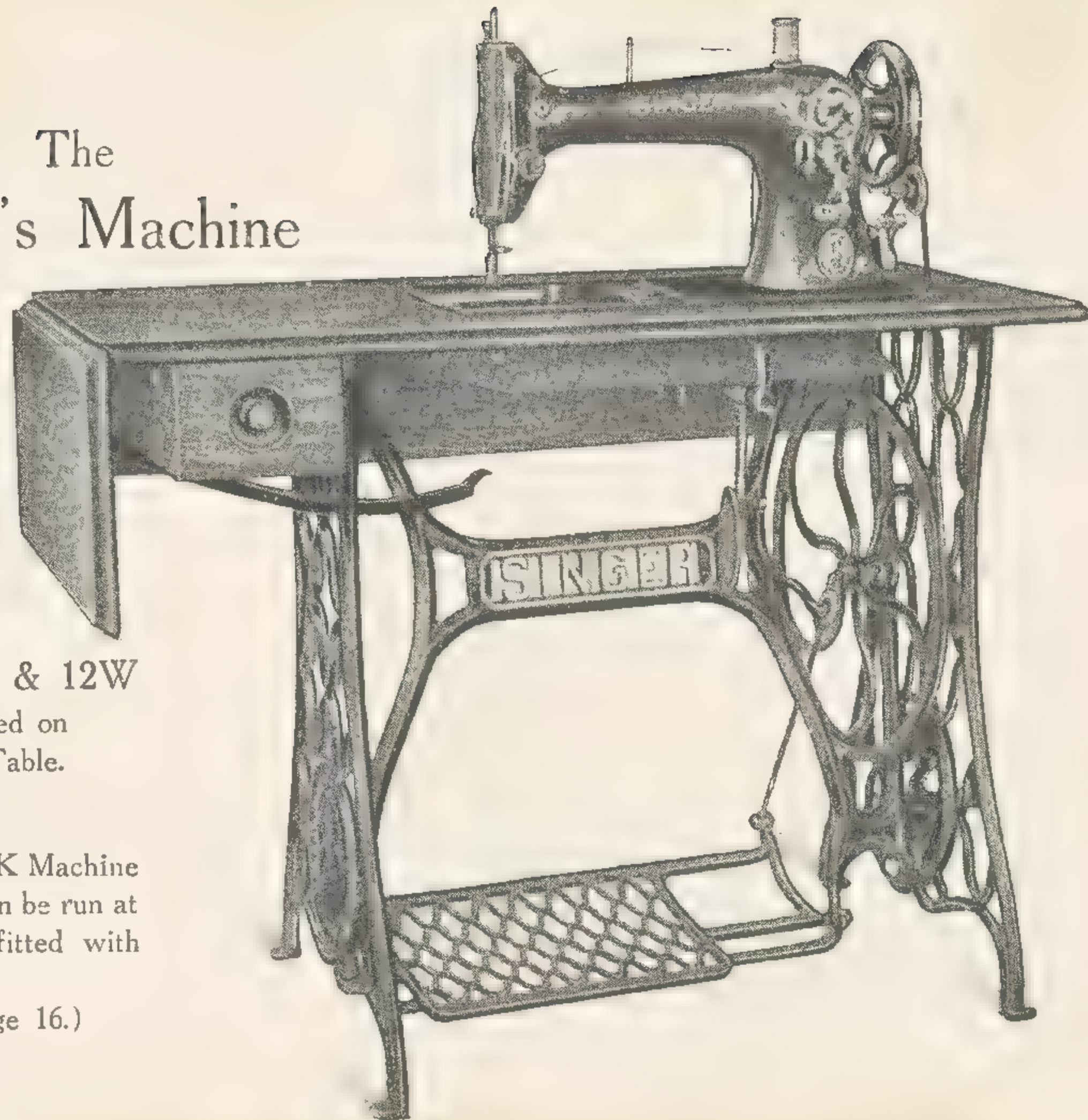
The Tailor's Machine

Singer Machine
No. 31K
on Ball-Bearing
Stand with Back
and End Leaf
Table.

Machines Nos. 16K & 12W
can also be supplied on
the same style of Table.

The advantage of the 31K Machine
over the 16K is that it can be run at
a higher speed and is fitted with
Knee Lifter.

(For Prices see page 16.)



Singer Machine No. 31K



For Tailoring

This machine can be supplied with attachments for Binding Awnings with Scallops and Points, Felt Shoes, Slippers, etc. The table shown is of a very convenient and popular form for the use of Tailors and other manufacturers handling large quantities of material in irregular forms.

(For Prices see page 16.)

Singer Machine No. 12W

For
**Shoe Repairing and
 General Leather Stitching**

Fitted with Side Wheel; Upper Feed moves in any direction. Lower Arm and Bed 17 inches in length.

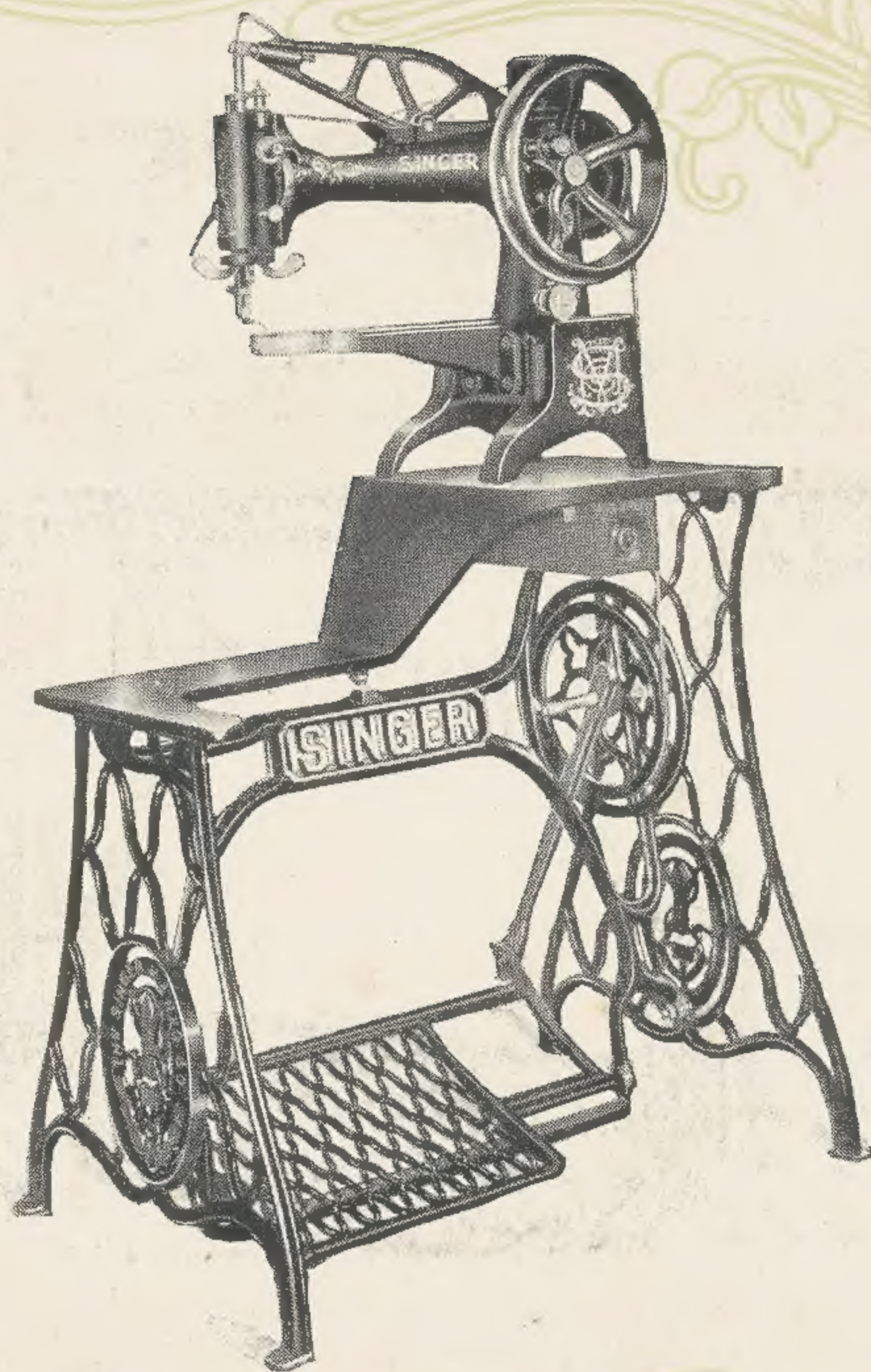
In the whole range of leather stitching this is one of the handiest machines ever invented.

It is extensively used all over the world for Boot and Shoe Repairing, Furriers' Work, Slipper Binding, Harness Work, etc.

The stitching is performed at the extreme outer end of the arm, which may be inserted into the interior of very small and long apertures.

This machine is unequalled for repairing boots and shoes, and will stitch closer to the toe of a boot than any other; it will use waxed and coarse thread, making a tight seam; it also uses a fine needle and thread.

(For Prices see page 16.)



Singer Machine No. 29K

PRICES OF MACHINES

FOR DRESSMAKERS, TAILORS AND SHOE REPAIRERS,

as illustrated on pages 12, 13, 14 and 15.

Style of Machine.	List Price.	For Cash, Short-time or Regular Payments, customers may obtain the following Discounts from the List Price.		
		10% For Cash.	7½% If paid for within 3 months from date of agreement.	2½% If a payment of 5/- per week be maintained during the hiring.
Making the net amount payable in order to complete purchase.				
15K	£13 15 0	£12 7 6	£12 14 6	£13 8 3
31K	15 0 0	13 10 0	13 17 6	14 12 6
29K	13 15 0	12 7 6	12 14 6	13 8 3

Singer Sewing Machines

The Importance of Good Oil.



There is nothing connected with a Sewing Machine which better illustrates the proverb that "the best is the cheapest" than the small but important item of OIL.

BAD OIL does not last as long as good oil and is really dearer. makes a machine run hard.

BAD OIL leaves a sediment and the oily portion is soon exhausted. gums and clogs the oil holes so that the oil does not reach the bearings.

TO AVOID THESE TROUBLES

use only Singer Oil, not only for your Sewing Machine but for everything requiring a fine lubricant, such as—

Carpet Sweepers.	Pocket Knives.	Roller Skates.	Shears.
Lawn Mowers.	Hinges.	Talking Machines.	Wringers.
Mail Carts.	Bicycles.	Carpenters' Tools.	Mangles.
Perambulators.	Cameras.	Typewriters.	Knife Machines.

SINGER OIL WILL MAKE THEM WORK SMOOTHLY AND SURELY,
AND INCREASE THEIR LIFE AND EFFICIENCY.

THIS TRADE MARK APPEARS ON EVERY
SINGER SEWING MACHINE.

TRADE



MARK

SINGER MACHINES ARE SOLD ONLY BY
SINGER SEWING MACHINE COMPANY.